

Installation Guide

Installation Kit: 911-6104-10



This installation guide covers various makes and models of equipment. See pages 2 & 3 for supported models

2WD/MFWD Tractors:

Case IH

Maxxum 100	MXU125	Puma 170
Maxxum 110	MXU130 Value	Puma 175
Maxxum 115	MXU135	Puma 180
Maxxum 120	Optum 270	Puma 185
Maxxum 125	Optum 300	Puma 195
Maxxum 130	Puma 115	Puma 200
Maxxum 135	Puma 125	Puma 210
Maxxum 140	Puma 130	Puma 215
Maxxum 145	Puma 140	Puma 220
Maxxum 150	Puma 145	Puma 225
MXU100	Puma 150	Puma 230
MXU110	Puma 155	Puma 240
MXU115	Puma 160	Puma 240
MXU115 Value	Puma 165	

Versatile

175	295
195	310
210	315
260	335
265	360
290	

New Holland

T6.120	T7.210
T6.140	T7.220
T6.145	T7.230
T6.150	T7.235
T6.155	T7.245
T6.160	T7.250
T6.165	T7.260
T6.175	T7.270
T6.180	T7.290
T6020	T7.315
T6030	T7030
T6040	T7040
T6050	T7050
T6060	T7060
T6070	T7070
T6080	TS100A
T7.170	TS110A
T7.175	TS115A
T7.185	TS125A
T7.190	TS130A
T7.200	TS135A

John Deere

6100	7130 - Standard	8130
6105M	7200	8200
6110	7200R	8210
6110M	7210	8220
6115M	7210R	8225R
6120	7215R	8230
6120M	7220	8235R
6125M	7230 - Standard	8245R
6130 - Standard	7230R	8260R
6130M	7250R	8270R
6140M	7260R	8285R
6145M	7270R	8295R
6150M	7280R	8300
6155M	7290R	8310
6170M	7310R	8310R
6175M	7320	8320
6195M	7330 - Standard	8320R
6200	7400	8330
6210	7410	8335R
6220	7420	8345R
6230 - Standard	7430 - Standard	8360R
6300	7510	8370R
6310	7520	8400
6320	7600	8400R
6330 - Standard	7610	8410
6400	7630	8420
6410	7700	8430
6420	7710	8520
6430 - Standard	7720	8530
6520	7730	
6534 - Premium	7800	
6600	7810	
6610	7820	
6620	7830	
6800	7920	
6810	7930	
6820	8100	
6910	8110	
6920	8120	

Kubota

M8-191
M8-211

Articulated Tractors:

Versatile			John Deere		
350	550	* first 3 digits of serial number must be 307 or higher	9100	9370R	9520R
375*	550DT		9120	9410R	9520RX
400*	570	+ 2012 and newer models	9200	9420	9530
500+	570DT		9220	9420R	9560R
500DT	575+		9230	9430	9570R
520	610		9300	9460R	9570RX
520DT	610DT		9320	9470R	9620R
			9330	9470RX	9620RX
			9360R	9510R	9630

Swathers:

John Deere

W235
W260

Combines:

John Deere

S560	S770	T670*	* 2012 and newer models
S660	S780	W540*	
S670	S790	W550*	
S680	T550*	W650*	
S690	T560*	W660*	
S760	T660*		

Track Tractors:

John Deere

8100T	8320RT	9320T
8110T	8330T	9400T
8120T	8335RT	9420T
8200T	8345RT	9430T
8210T	8360RT	9460RT
8220T	8370RT	9470RT
8230T	8400T	9510RT
8230T	8410T	9520RT
8295RT	8420T	9530T
8300T	8430T	9560RT
8310RT	8520T	9570RT
8310T	9300T	9630T

Introduction

The procedures outlined in this guide provide the basic installation procedure for the ESi² on the machines specified on the front cover of this guide. If you do not see your machine listed, contact customer support for further instruction. The kit components and corresponding install instructions are designated for each applicable machine make and model and may not be used on undesignated machine models.

Review Installation Kit Contents

Kit contents are outlined in the ESi² installation section on pages 10 and 11. Read all applicable installation instructions for your machine's model and ensure that all required kit components are present before beginning the installation.

NOTE: Due to manufacturing processes outside of Outback Guidance's control, the installer may have to adapt this kit to your distinct situation.

Read and Follow All Safety Messages

- Refer to the safety manual for the machine that the ESi² is being installed on for operating age and precautions.
- Prior to installing and operating the ESi², read and understand all safety precautions as outlined in this guide
- Store this guide and all related safety information with related machine manuals for future reference.

Safety Information and Warnings*

- ESi² is NOT designed to replace the machine's operator and is designed as a driving aid for use in precision agriculture applications.
- ESi² is NOT intended for use on roadways and should remain disengaged at all times when traveling on roadways.
- ESi² does NOT control the speed of the machine and a human operator is required to manually maintain a safe operating speed.
- ESi² does NOT avoid obstacles. To prevent human, machine and property injury a human operator is required to operate the machine at all times.
- Do NOT allow anyone to operate without instructions.
- At all times the driver is fully responsible for the safe operation of the vehicle.

* The safety warnings contained in this installation guide are not meant to be an exhaustive list of potential hazards.

Introduction

- To ensure peak performance, ESi² should only be installed after a thorough machine inspection has been conducted. The contents of this kit and ESi² are not intended to replace preventative and or needed maintenance. To avoid bodily and machine injury, follow the machine preparation checklist below:
 - ⇒ Inspect steering linkage: Machine should drive in a straight line without manual correction
 - ⇒ Turn off machine and power-off all electronic gauges, monitors and external devices when installing or performing maintenance on the ESi²
 - ⇒ Park machine on a clean and level surface
 - ⇒ Lower all implements and headers to the ground
 - ⇒ Apply the parking break and chock wheels
 - ⇒ Inspect any drilling and/or cutting sites to ensure no electrical wiring damage will be incurred

Install Guide Index

This installation guide covers multiple machine types. Refer to the index below to find the section that applies to your machine.

Install #1

John Deere R series Tractors

For machine specific installation instructions start at page 8.



Install #2

John Deere Combines and Swathers

For machine specific installation instructions start at page 14.



Install #3

John Deere 7000, 8000 & 9000 series tractors

For machine specific installation instructions start at page 20.



Install #4

John Deere Tractors with Left-Hand reversers

For machine specific installation instructions start at page 26.



Install #5

John Deere 6000, 6000M, and 7000 2WD/MFWD tractors

For machine specific installation instructions start at page 32.



Install #6

Case IH and New Holland 2WD/MFWD tractors

For machine specific installation instructions start at page 38.



Install #7

Versatile MFWD & Articulated Tractors

For machine specific installation instructions start at page 44.



Install #8

Versatile Nemesis and Kubota M8 MFWD Tractors

For machine specific installation instructions start at page 50.



Install #1

John Deere R series Tractors

Remove the steering wheel center cap and the nut holding the telescoping actuator knob on the shaft.

SAVE the nut as it will be used later in this installation.



Remove the telescoping actuator knob and metal actuators to gain access to the nut that holds the steering wheel onto the shaft.

Remove and **SAVE** this nut as it will be used later in this installation.

Following the manufacturer's recommended procedure remove the steering wheel.



NOTE: Consult your equipment dealer if you are unsure of the correct procedure for removing the steering wheel.

Install #1

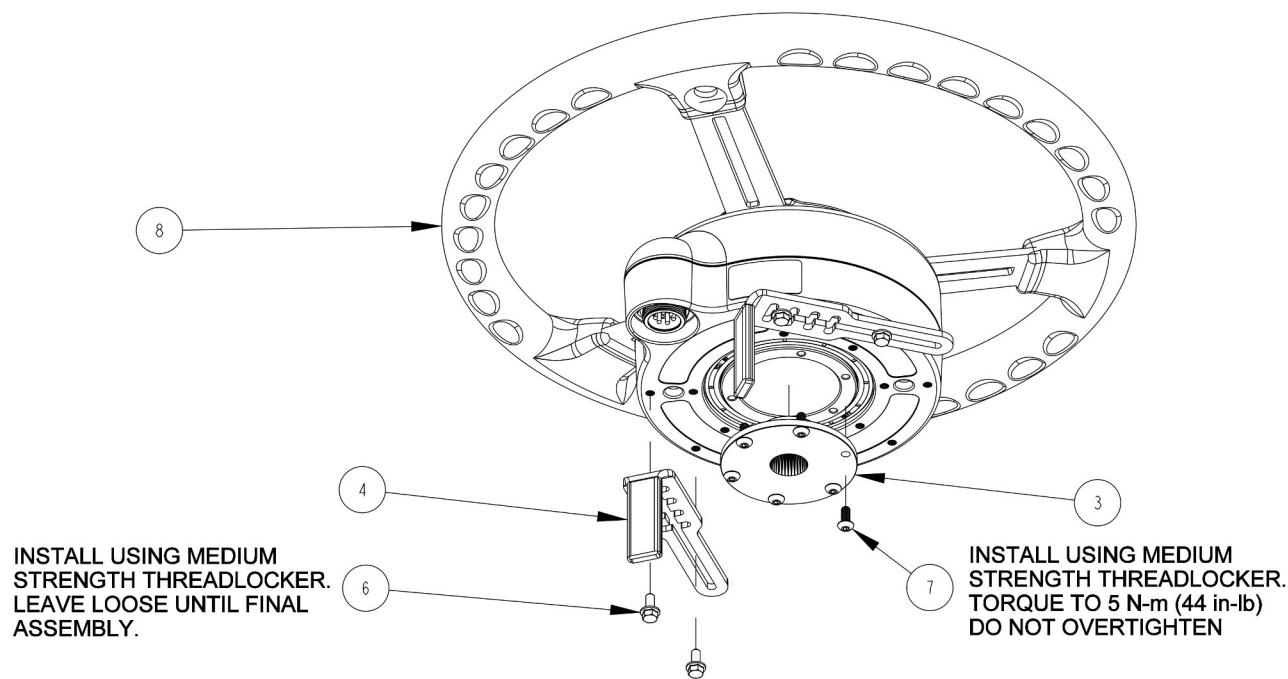
John Deere R series Tractors

Steering column is ready for ESi² installation.

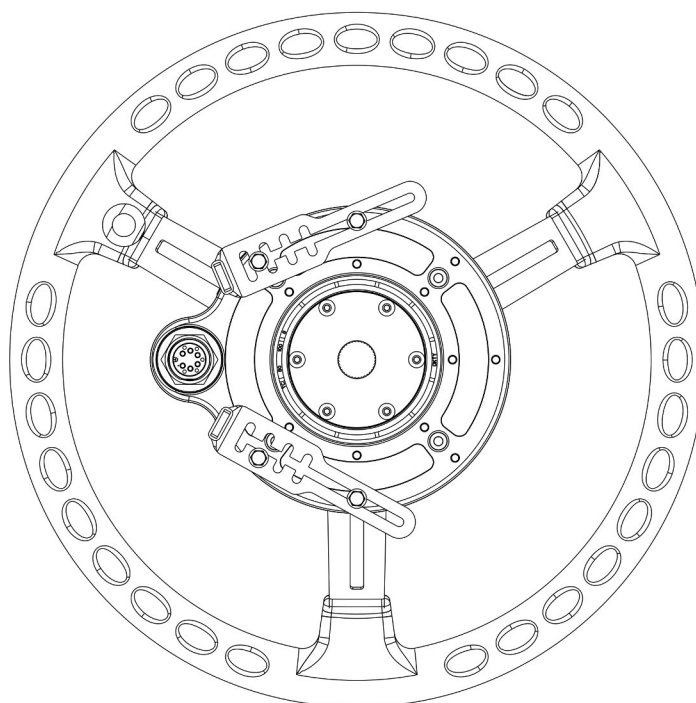


Install #1

John Deere R series Tractors



BRACKET ORIENTATION

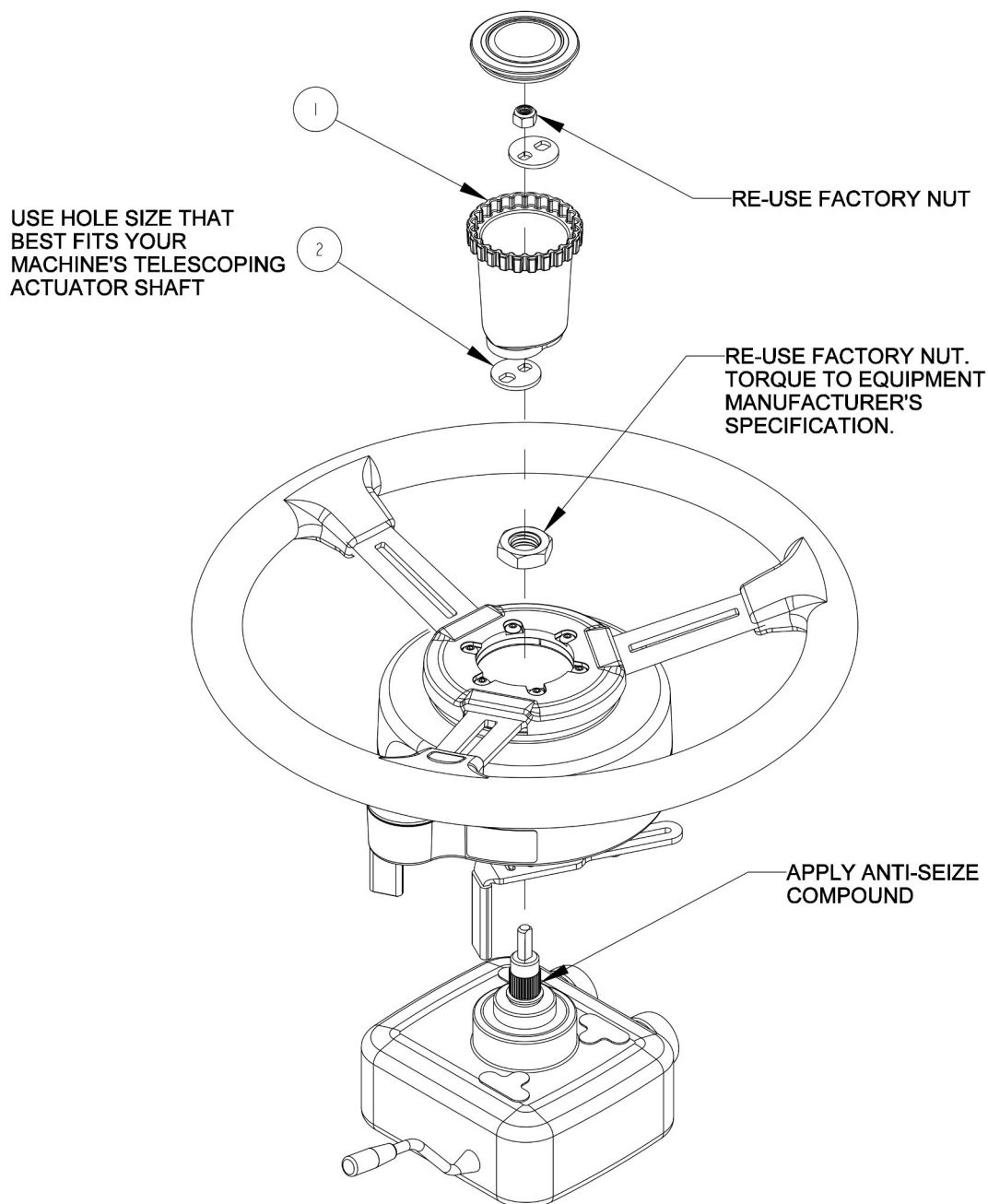


ASSEMBLY INSTRUCTIONS:

1. PRE-ASSEMBLE SPLINE ADAPTER AND BRACKETS TO WHEEL MOTOR.
2. PLACE ASSEMBLY ON STEERING SHAFT AND RE-INSTALL STEERING SHAFT NUT.
3. ADJUST BRACKETS TO FIT SNUG AGAINST THE STEERING COLUMN.
4. TIGHTEN SCREWS ATTACHING BRACKETS TO BOTTOM OF MOTOR.
TORQUE TO 5 N-m (44 in-lb). DO NOT OVERTIGHTEN.
ENSURE THAT THE ANTI-ROTATION BRACKETS DO NOT CONTACT THE SPLINE ADAPTER.
ENSURE THAT THE MOTOR DOES NOT MOVE IN RELATION TO THE STEERING COLUMN.
5. ASSEMBLE TELESCOPING ACTUATOR COMPONENTS.
6. ROTATE THE WHEEL A FULL TURN TO ENSURE THERE IS NO INTERFERENCE BETWEEN THE BRACKETS AND SPLINE ADAPTER, OR ANY MOVING PARTS AND MACHINE CONTROLS.

Install #1

John Deere R series Tractors



ITEM	QTY	PART NUMBER	DESCRIPTION	NOTES
1	1	600-1486-01	TELESCOPING ACTUATOR KNOB	
2	2	601-1290-01	TELESCOPING ACTUATOR PLATE	
3	1	604-0074-10	SPLINE ADAPTER- ESI2, 36T x .875 MAJOR x .180/.870 OFFSET	
4	2	640-0184-01	ANTI-ROTATION BRACKET	
5	1	675-0126-000	LOCTITE 242 MEDIUM STRENGTH THREADLOCKER	NOT SHOWN
6	4	675-1345-10	SCREW, M5-0.8 X 12MM, HEX FLANGE	
7	6	675-1351-10	SCREW, M5-0.8 X 12MM, BUTTON HEAD	
8	1	910-4024-10	ESI2 ELECTRIC STEERING WHEEL	

Install #1

John Deere R series Tractors

ESi² wheel successfully installed.
Continue to page 49 to complete the installation.



Install #2

John Deere Combines and Swathers

Remove the steering wheel center cap and the nut holding the telescoping actuator knob on the shaft.

SAVE the nut as it will be used later in this installation.

Remove the telescoping actuator knob and actuator plates to gain access to the nut that holds the steering wheel onto the shaft.

Save the actuator plates as they will be used later in this installation



Remove and **SAVE** the nut that holds the steering wheel onto the shaft as it will be used later in this installation.

Following the manufacturer's recommended procedure remove the steering wheel.

NOTE: Consult your equipment dealer if you are unsure of the correct procedure for removing the steering wheel.



Install #2

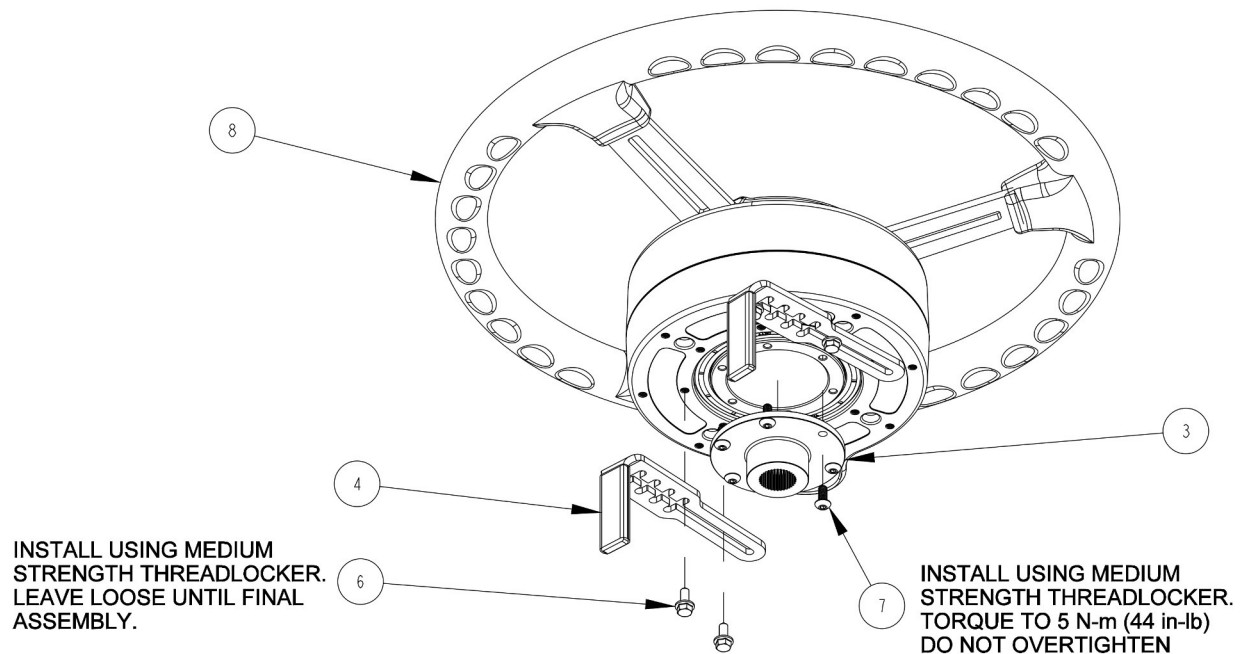
John Deere Combines and Swathers

Steering column is ready for ESi² installation.

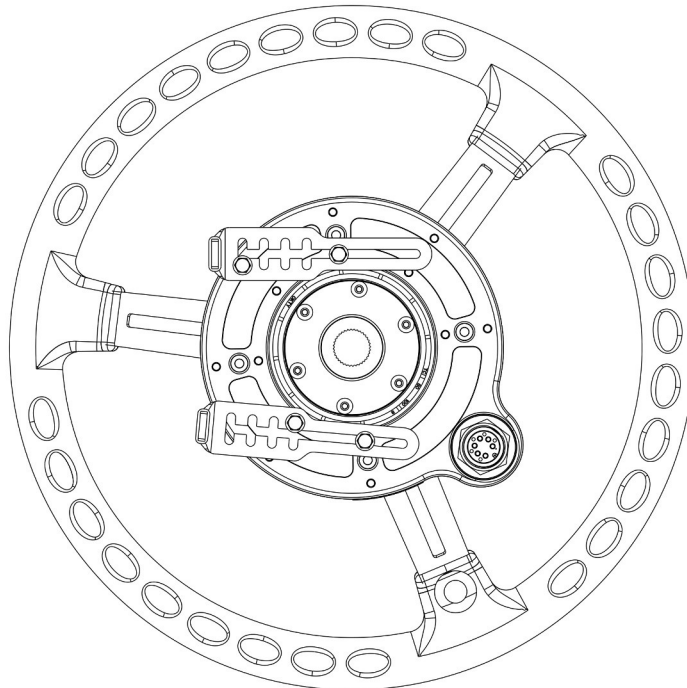


Install #2

John Deere Combines and Swathers



BRACKET ORIENTATION

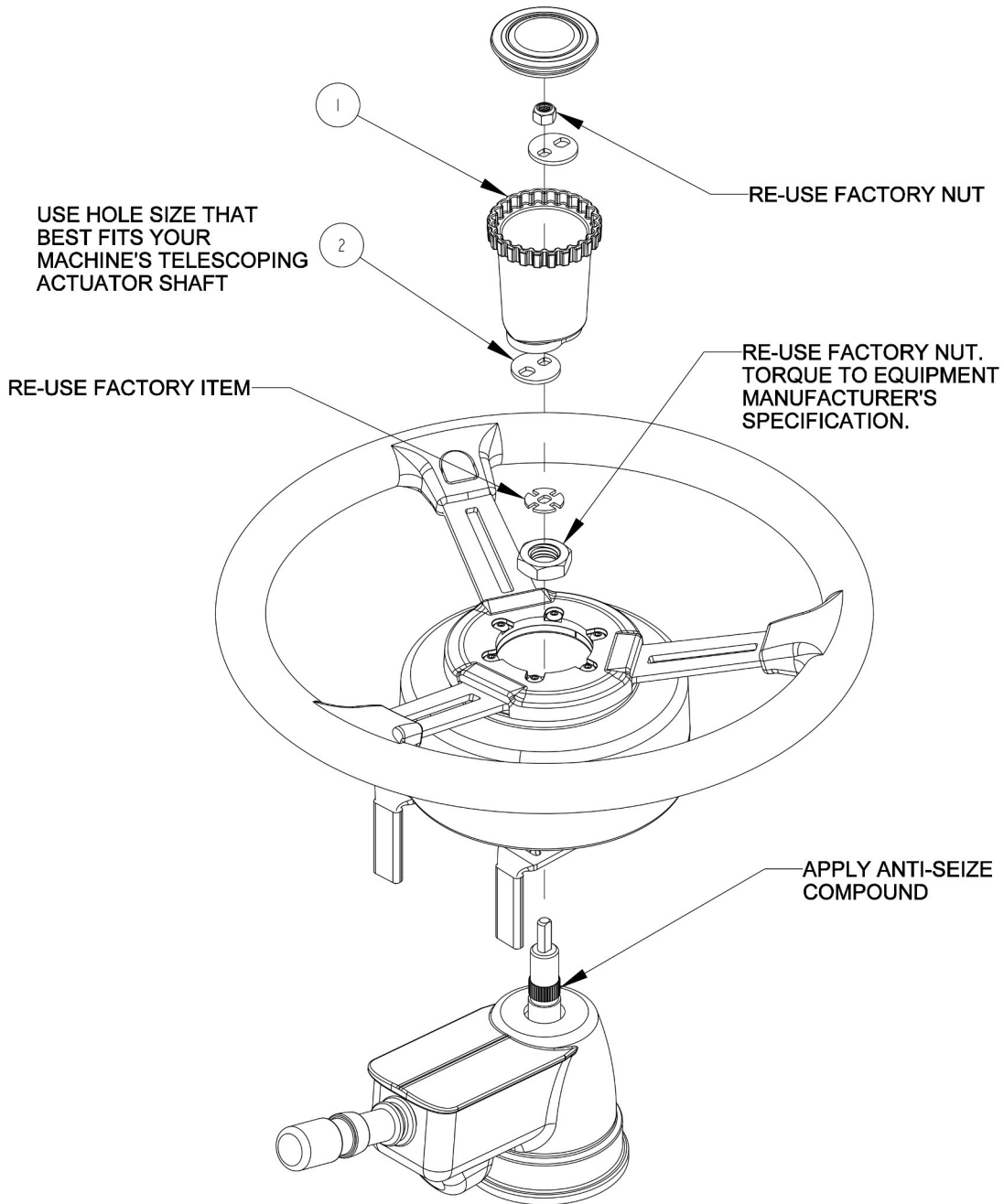


ASSEMBLY INSTRUCTIONS:

1. PRE-ASSEMBLE SPLINE ADAPTER AND BRACKETS TO WHEEL MOTOR.
2. PLACE ASSEMBLY ON STEERING SHAFT AND RE-INSTALL STEERING SHAFT NUT.
3. ADJUST BRACKETS TO FIT SNUG AGAINST THE STEERING COLUMN.
4. TIGHTEN SCREWS ATTACHING BRACKETS TO BOTTOM OF MOTOR. TORQUE TO 5 N-m (44 in-lb). DO NOT OVERTIGHTEN. ENSURE THAT THE ANTI-ROTATION BRACKETS DO NOT CONTACT THE SPLINE ADAPTER. ENSURE THAT THE MOTOR DOES NOT MOVE IN RELATION TO THE STEERING COLUMN.
5. ASSEMBLE TELESCOPING ACTUATOR COMPONENTS.
6. ROTATE THE WHEEL A FULL TURN TO ENSURE THERE IS NO INTERFERENCE BETWEEN THE BRACKETS AND SPLINE ADAPTER, OR ANY MOVING PARTS AND MACHINE CONTROLS.

Install #2

John Deere Combines and Swathers



ITEM	QTY	PART NUMBER	DESCRIPTION	NOTES
1	1	600-1486-01	TELESCOPING ACTUATOR KNOB	
2	2	601-1290-01	TELESCOPING ACTUATOR PLATE	
3	1	604-0074-10	SPLINE ADAPTER- ESI2, 36T x .875 MAJOR x .180/.870 OFFSET	
4	2	640-0184-01	ANTI-ROTATION BRACKET	
5	1	675-0126-000	LOCTITE 242 MEDIUM STRENGTH THREADLOCKER	NOT SHOWN
6	4	675-1345-10	SCREW, M5-0.8 X 12MM, HEX FLANGE	
7	6	675-1351-10	SCREW, M5-0.8 X 12MM, BUTTON HEAD	
8	1	910-4024-10	ESI2 ELECTRIC STEERING WHEEL	

Install #2

John Deere Combines and Swathers

ESi² wheel successfully installed.

Continue to page 49 to complete the installation.



Install #3

John Deere 7000, 8000 & 9000 series tractors

Remove the steering wheel center cap and the nut holding the telescoping actuator knob on the shaft.

SAVE the nut as it will be used later in this installation.



Remove the telescoping actuator knob and actuator plates to gain access to the nut that holds the steering wheel onto the shaft.

Remove and **SAVE** this nut as it will be used later in this installation.

Following the manufacturer's recommended procedure remove the steering wheel.



NOTE: Consult your equipment dealer if you are unsure of the correct procedure for removing the steering wheel.

Install #3

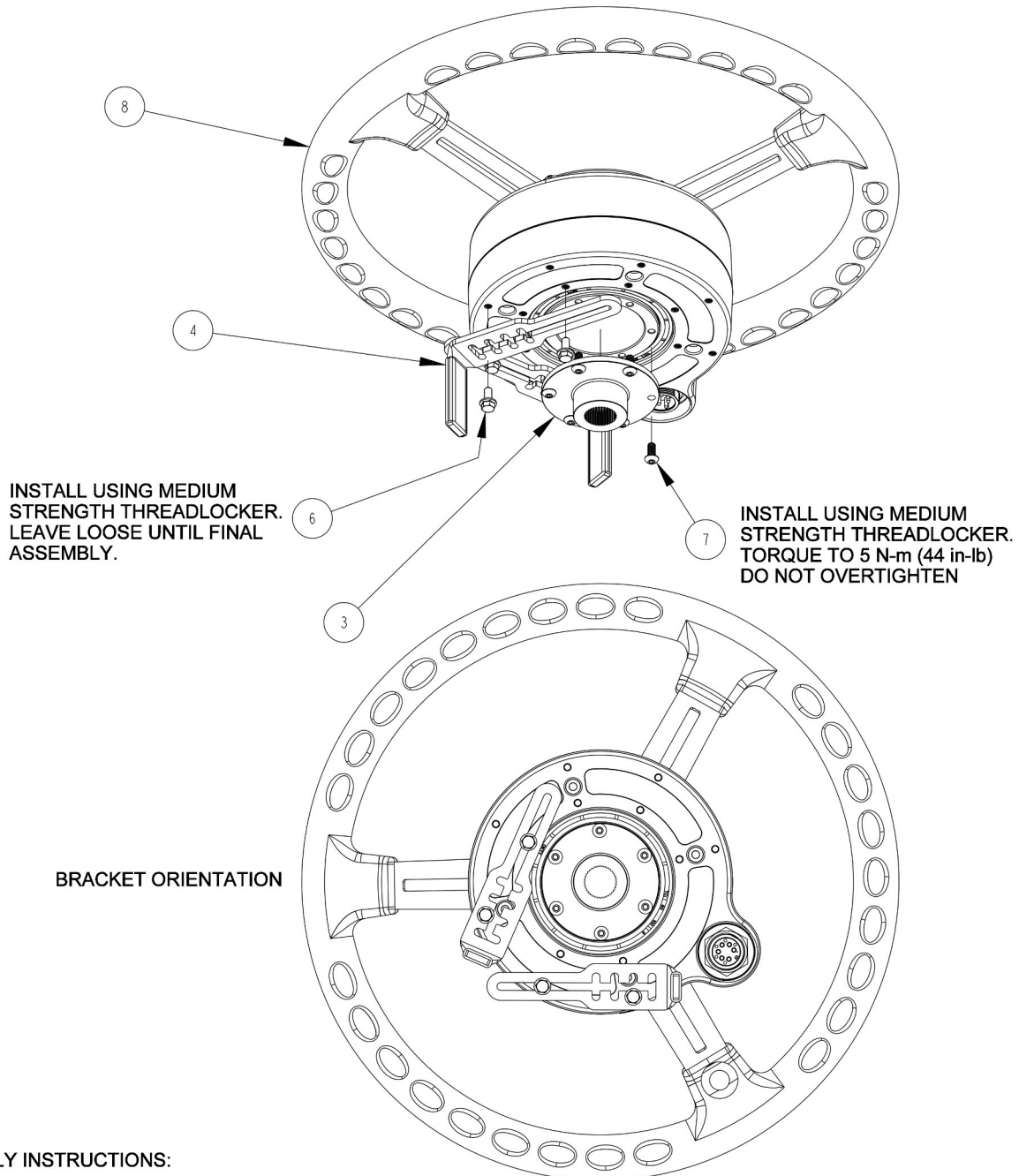
John Deere 7000, 8000 & 9000 series tractors

Steering column is ready for ESI² installation.



Install #3

John Deere 7000, 8000 & 9000 series tractors

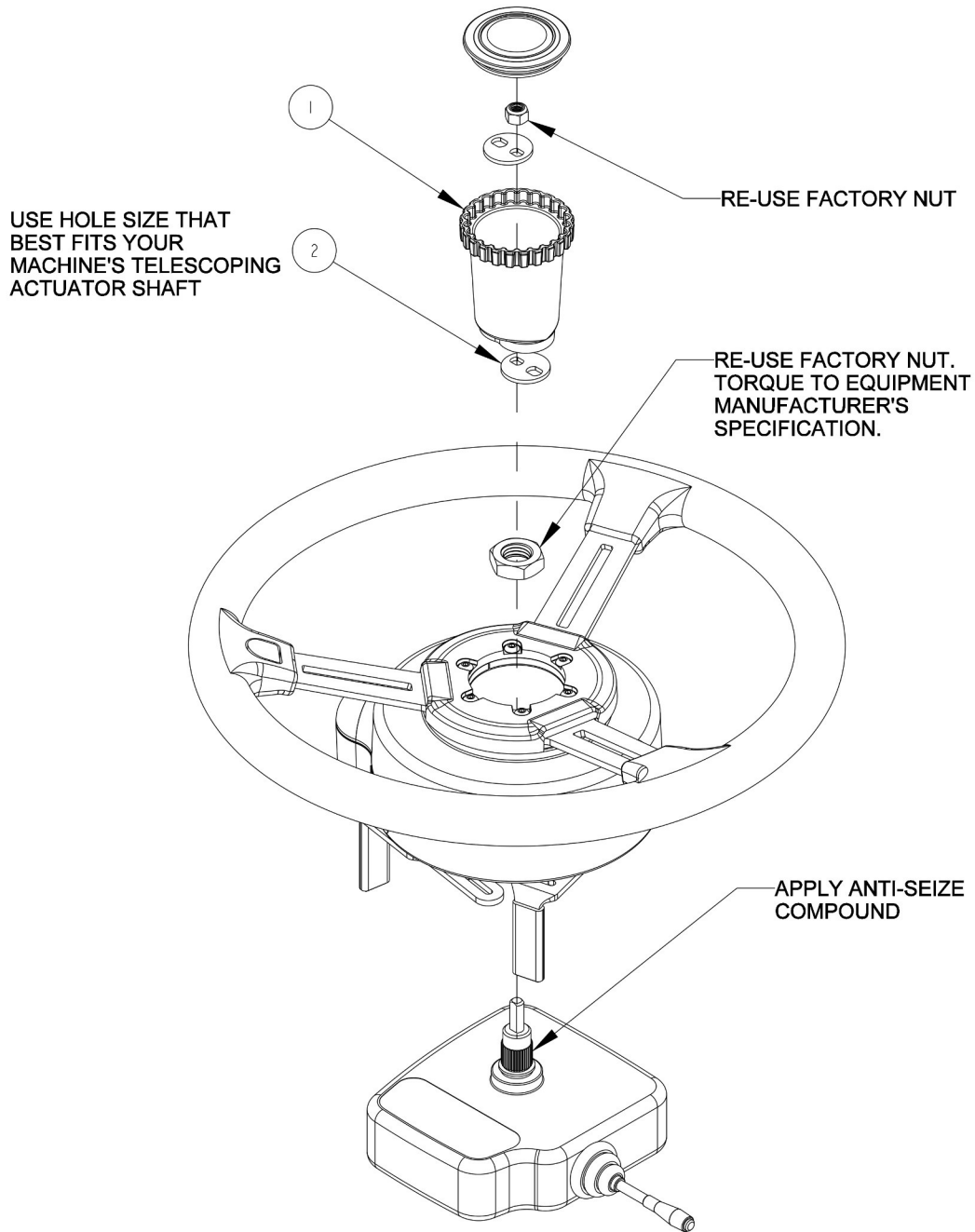


ASSEMBLY INSTRUCTIONS:

1. PRE-ASSEMBLE SPLINE ADAPTER AND BRACKETS TO WHEEL MOTOR.
2. PLACE ASSEMBLY ON STEERING SHAFT AND RE-INSTALL STEERING SHAFT NUT.
3. ADJUST BRACKETS TO FIT SNUG AGAINST THE STEERING COLUMN.
4. TIGHTEN SCREWS ATTACHING BRACKETS TO BOTTOM OF MOTOR.
TORQUE TO 5 N-m (44 in-lb). DO NOT OVERTIGHTEN.
ENSURE THAT THE ANTI-ROTATION BRACKETS DO NOT CONTACT THE SPLINE ADAPTER.
ENSURE THAT THE MOTOR DOES NOT MOVE IN RELATION TO THE STEERING COLUMN.
5. ASSEMBLE TELESCOPING ACTUATOR COMPONENTS.
6. ROTATE THE WHEEL A FULL TURN TO ENSURE THERE IS NO INTERFERENCE BETWEEN THE BRACKETS AND SPLINE ADAPTER, OR ANY MOVING PARTS AND MACHINE CONTROLS.

Install #3

John Deere 7000, 8000 & 9000 series tractors



ITEM	QTY	PART NUMBER	DESCRIPTION	NOTES
1	1	600-1486-01	TELESCOPING ACTUATOR KNOB	
2	2	601-1290-01	TELESCOPING ACTUATOR PLATE	
3	1	604-0074-10	SPLINE ADAPTER- ES12, 36T x .875 MAJOR x .180/.870 OFFSET	
4	2	640-0184-01	ANTI-ROTATION BRACKET	
5	1	675-0126-000	LOCTITE 242 MEDIUM STRENGTH THREADLOCKER	NOT SHOWN
6	4	675-1345-10	SCREW, M5-0.8 X 12MM, HEX FLANGE	
7	6	675-1351-10	SCREW, M5-0.8 X 12MM, BUTTON HEAD	
8	1	910-4024-10	ES12 ELECTRIC STEERING WHEEL	

Install #3

John Deere 7000, 8000 & 9000 series tractors

ESi² wheel successfully installed.
Continue to page 49 to complete the installation.



Install #4

John Deere Tractors with Left-Hand reversers

Remove the steering wheel center cap and the nut holding the telescoping actuator knob on the shaft.

SAVE the nut as it will be used later in this installation.

Remove the telescoping actuator knob and actuator plates to gain access to the nut that holds the steering wheel onto the shaft.

Remove and **SAVE** this nut as it will be used later in this installation.

Following the manufacturer's recommended procedure remove the steering wheel.

NOTE: Consult your equipment dealer if you are unsure of the correct procedure for removing the steering wheel.



Install #4

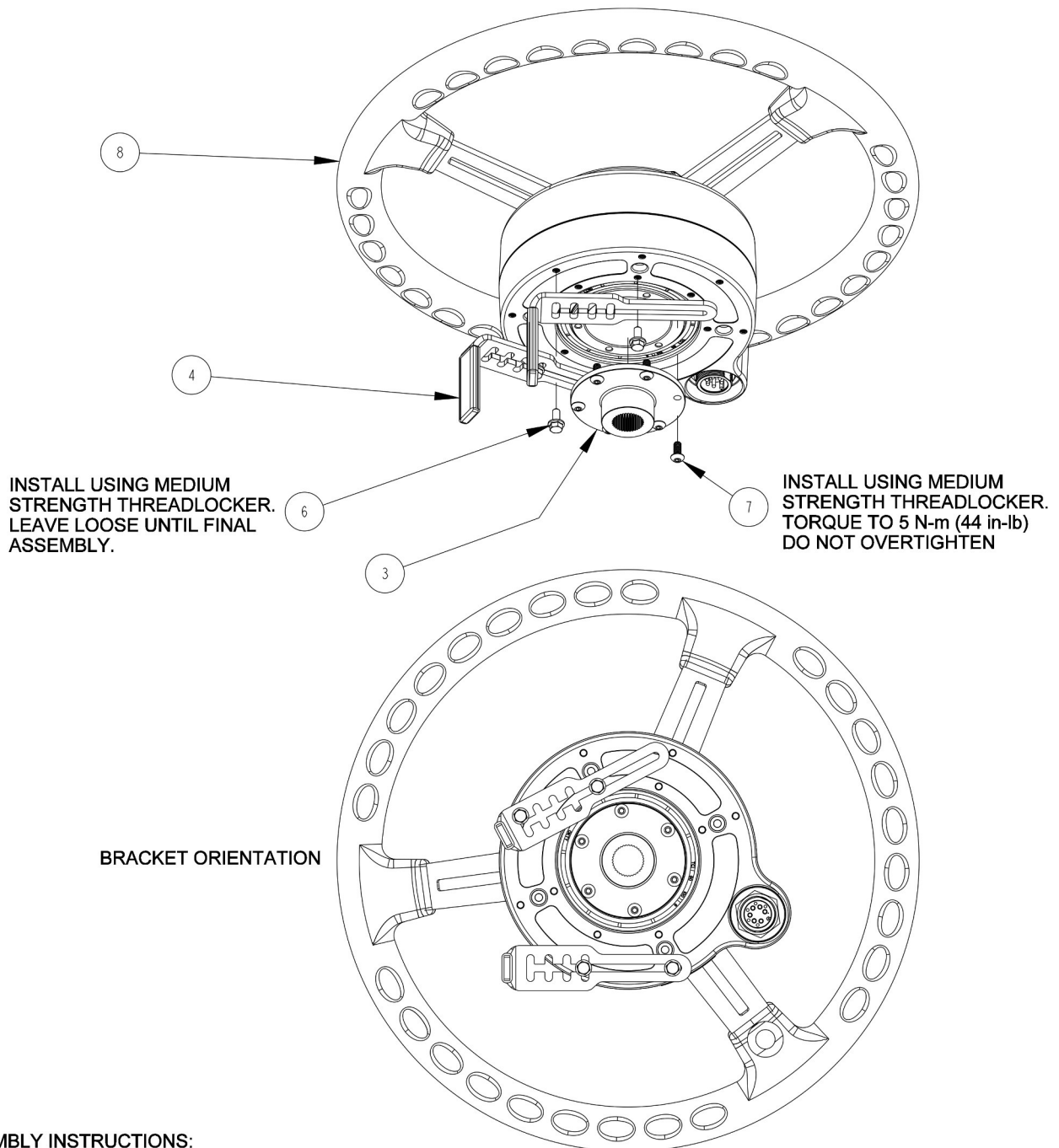
John Deere Tractors with Left-Hand reversers

Steering column is ready for ESi² installation.



Install #4

John Deere Tractors with Left-Hand reversers

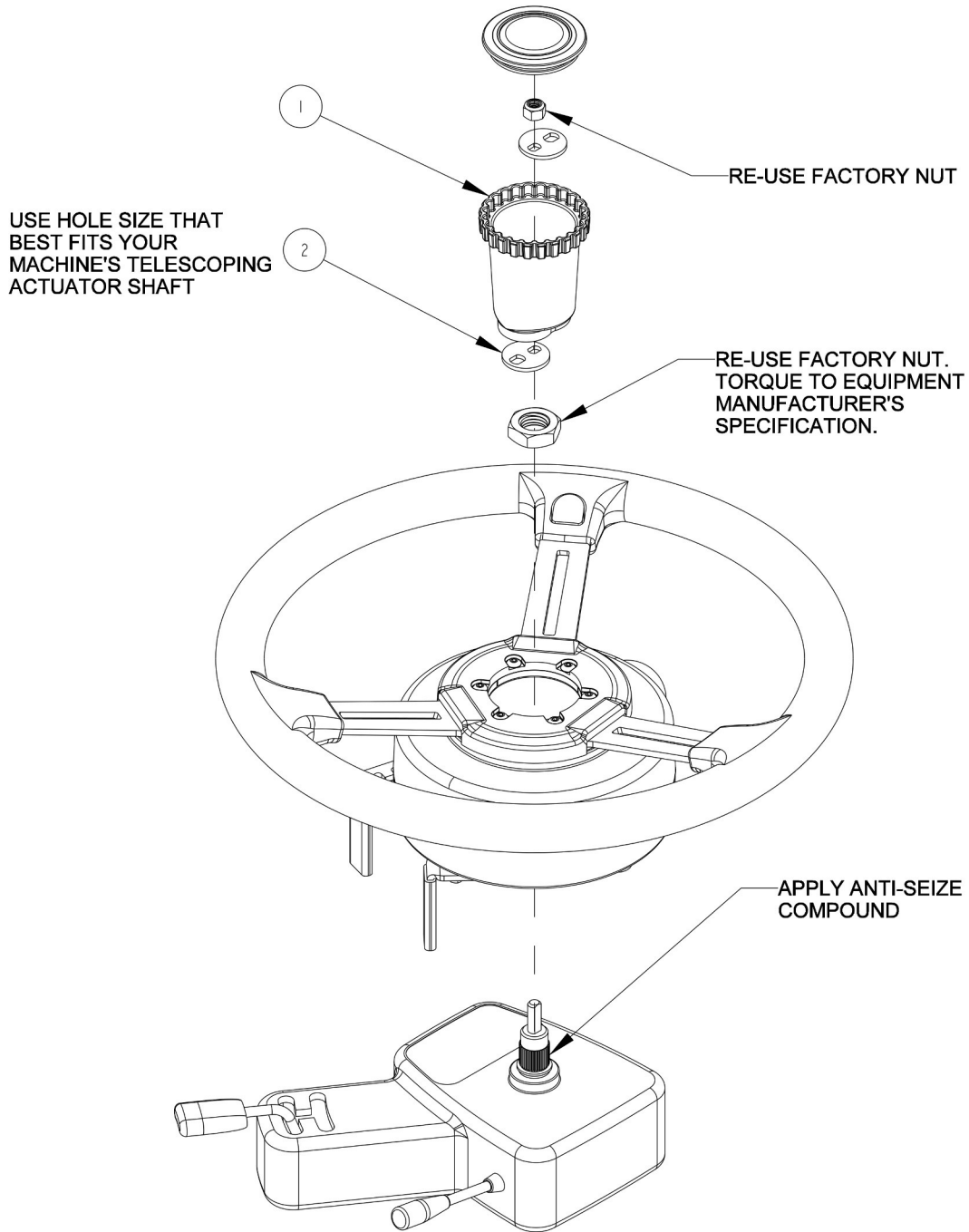


ASSEMBLY INSTRUCTIONS:

1. PRE-ASSEMBLE SPLINE ADAPTER AND BRACKETS TO WHEEL MOTOR.
2. PLACE ASSEMBLY ON STEERING SHAFT AND RE-INSTALL STEERING SHAFT NUT.
3. ADJUST BRACKETS TO FIT SNUG AGAINST THE STEERING COLUMN.
4. TIGHTEN SCREWS ATTACHING BRACKETS TO BOTTOM OF MOTOR.
TORQUE TO 5 N-m (44 in-lb). DO NOT OVERTIGHTEN.
ENSURE THAT THE ANTI-ROTATION BRACKETS DO NOT CONTACT THE SPLINE ADAPTER.
ENSURE THAT THE MOTOR DOES NOT MOVE IN RELATION TO THE STEERING COLUMN.
5. ASSEMBLE TELESCOPING ACTUATOR COMPONENTS.
6. ROTATE THE WHEEL A FULL TURN TO ENSURE THERE IS NO INTERFERENCE BETWEEN THE BRACKETS AND SPLINE ADAPTER, OR ANY MOVING PARTS AND MACHINE CONTROLS.

Install #4

John Deere Tractors with Left-Hand reversers



ITEM	QTY	PART NUMBER	DESCRIPTION	NOTES
1	1	600-1486-01	TELESCOPING ACTUATOR KNOB	
2	2	601-1290-01	TELESCOPING ACTUATOR PLATE	
3	1	604-0074-10	SPLINE ADAPTER- ESI2, 36T x .875 MAJOR x .180/.870 OFFSET	
4	2	640-0184-01	ANTI-ROTATION BRACKET	
5	1	675-0126-000	LOCTITE 242 MEDIUM STRENGTH THREADLOCKER	NOT SHOWN
6	4	675-1345-10	SCREW, M5-0.8 X 12MM, HEX FLANGE	
7	6	675-1351-10	SCREW, M5-0.8 X 12MM, BUTTON HEAD	
8	1	910-4024-10	ESI2 ELECTRIC STEERING WHEEL	

Install #4

John Deere Tractors with Left-Hand reversers

ESi² wheel successfully installed.
Continue to page 49 to complete the installation.



Install #5

John Deere 6000, 6000M, and 7000 2WD/MFWD tractors

Remove the steering wheel center cap and the nut holding the telescoping actuator knob on the shaft.

SAVE the nut as it will be used later in this installation.

Remove the telescoping actuator knob and actuator plates to gain access to the nut that holds the steering wheel onto the shaft.

Save the actuator plates as they will be used later in this installation →



Remove and **SAVE** the nut that holds the steering wheel onto the shaft as it will be used later in this installation.

Following the manufacturer's recommended procedure remove the steering wheel.

NOTE: Consult your equipment dealer if you are unsure of the correct procedure for removing the steering wheel.



Install #5

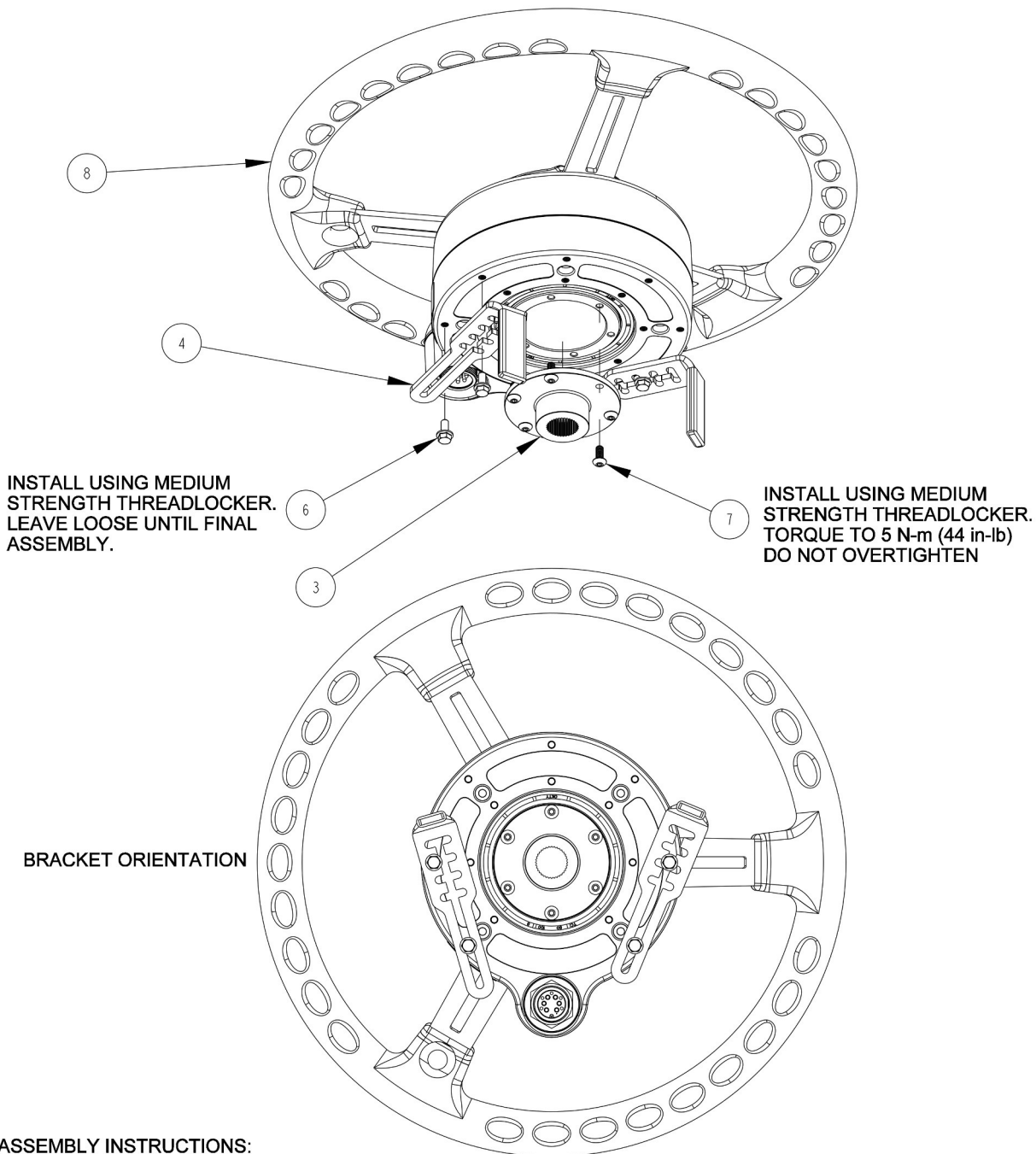
John Deere 6000, 6000M, and 7000 2WD/MFWD tractors

Steering column is ready for ESI² installation.



Install #5

John Deere 6000, 6000M, and 7000 2WD/MFWD tractors

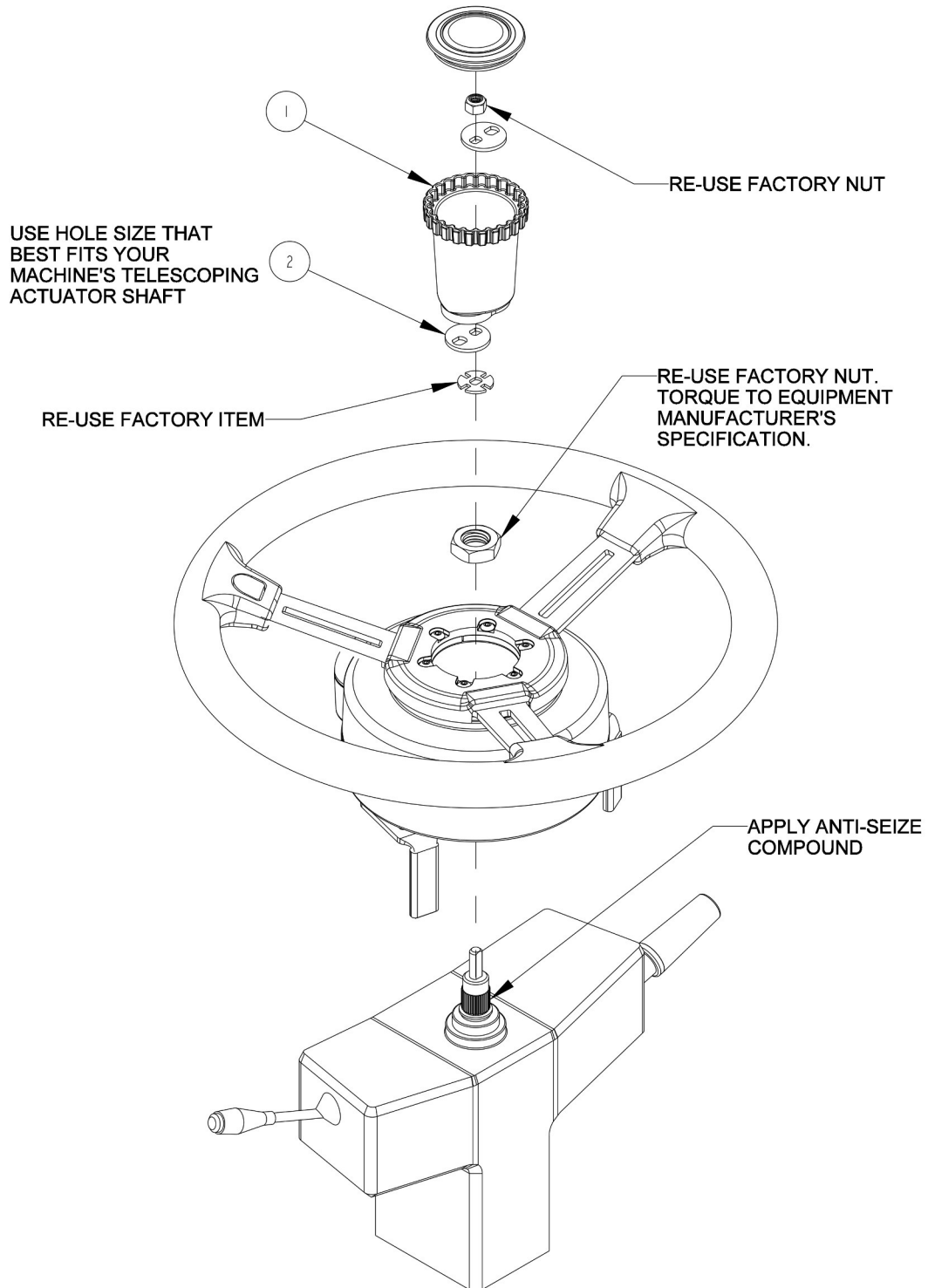


ASSEMBLY INSTRUCTIONS:

1. PRE-ASSEMBLE SPLINE ADAPTER AND BRACKETS TO WHEEL MOTOR.
2. PLACE ASSEMBLY ON STEERING SHAFT AND RE-INSTALL STEERING SHAFT NUT.
3. ADJUST BRACKETS TO FIT SNUG AGAINST THE STEERING COLUMN.
4. TIGHTEN SCREWS ATTACHING BRACKETS TO BOTTOM OF MOTOR.
TORQUE TO 5 N-m (44 in-lb). DO NOT OVERTIGHTEN.
ENSURE THAT THE ANTI-ROTATION BRACKETS DO NOT CONTACT THE SPLINE ADAPTER.
ENSURE THAT THE MOTOR DOES NOT MOVE IN RELATION TO THE STEERING COLUMN.
5. ASSEMBLE TELESCOPING ACTUATOR COMPONENTS.
6. ROTATE THE WHEEL A FULL TURN TO ENSURE THERE IS NO INTERFERENCE BETWEEN THE BRACKETS AND SPLINE ADAPTER, OR ANY MOVING PARTS AND MACHINE CONTROLS.

Install #5

John Deere 6000, 6000M, and 7000 2WD/MFWD tractors

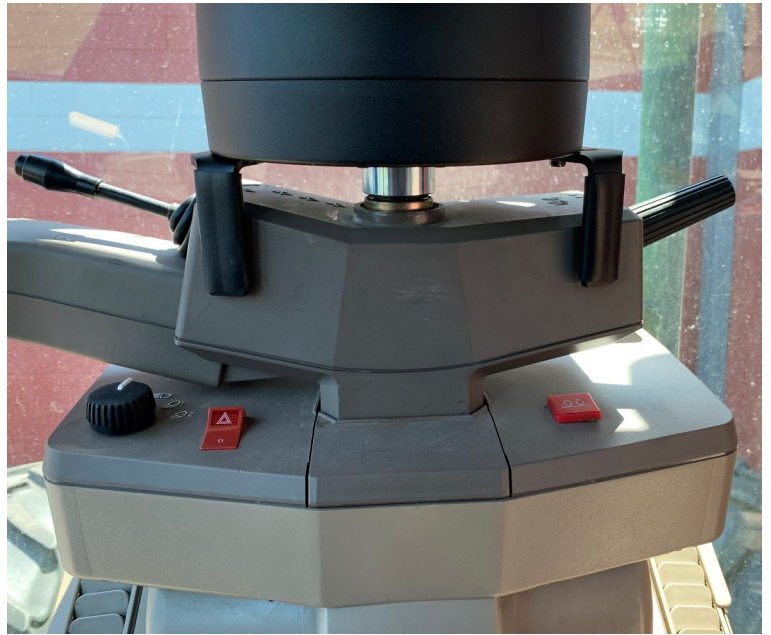


ITEM	QTY	PART NUMBER	DESCRIPTION	NOTES
1	1	600-1486-01	TELESCOPING ACTUATOR KNOB	
2	2	601-1290-01	TELESCOPING ACTUATOR PLATE	
3	1	604-0074-10	SPLINE ADAPTER- ES12, 36T x .875 MAJOR x .180/.870 OFFSET	
4	2	640-0184-01	ANTI-ROTATION BRACKET	
5	1	675-0126-000	LOCTITE 242 MEDIUM STRENGTH THREADLOCKER	NOT SHOWN
6	4	675-1345-10	SCREW, M5-0.8 X 12MM, HEX FLANGE	
7	6	675-1351-10	SCREW, M5-0.8 X 12MM, BUTTON HEAD	
8	1	910-4024-10	ES12 ELECTRIC STEERING WHEEL	

Install #5

John Deere 6000, 6000M, and 7000 2WD/MFWD tractors

ESi² wheel successfully installed.
Continue to page 49 to complete the installation.



Install #6

Case IH and New Holland 2WD/MFWD tractors

Remove the steering wheel center cap and the nut holding the telescoping actuator knob on the shaft.

SAVE the nut as it will be used later in this installation.



Remove the telescoping actuator knob to gain access to the nut that holds the steering wheel onto the shaft.

Remove and **SAVE** this nut as it will be used later in this installation.

Following the manufacturer's recommended procedure, remove the steering wheel.

NOTE: Consult your equipment dealer if you are unsure of the correct procedure for removing the steering wheel.



Install #6

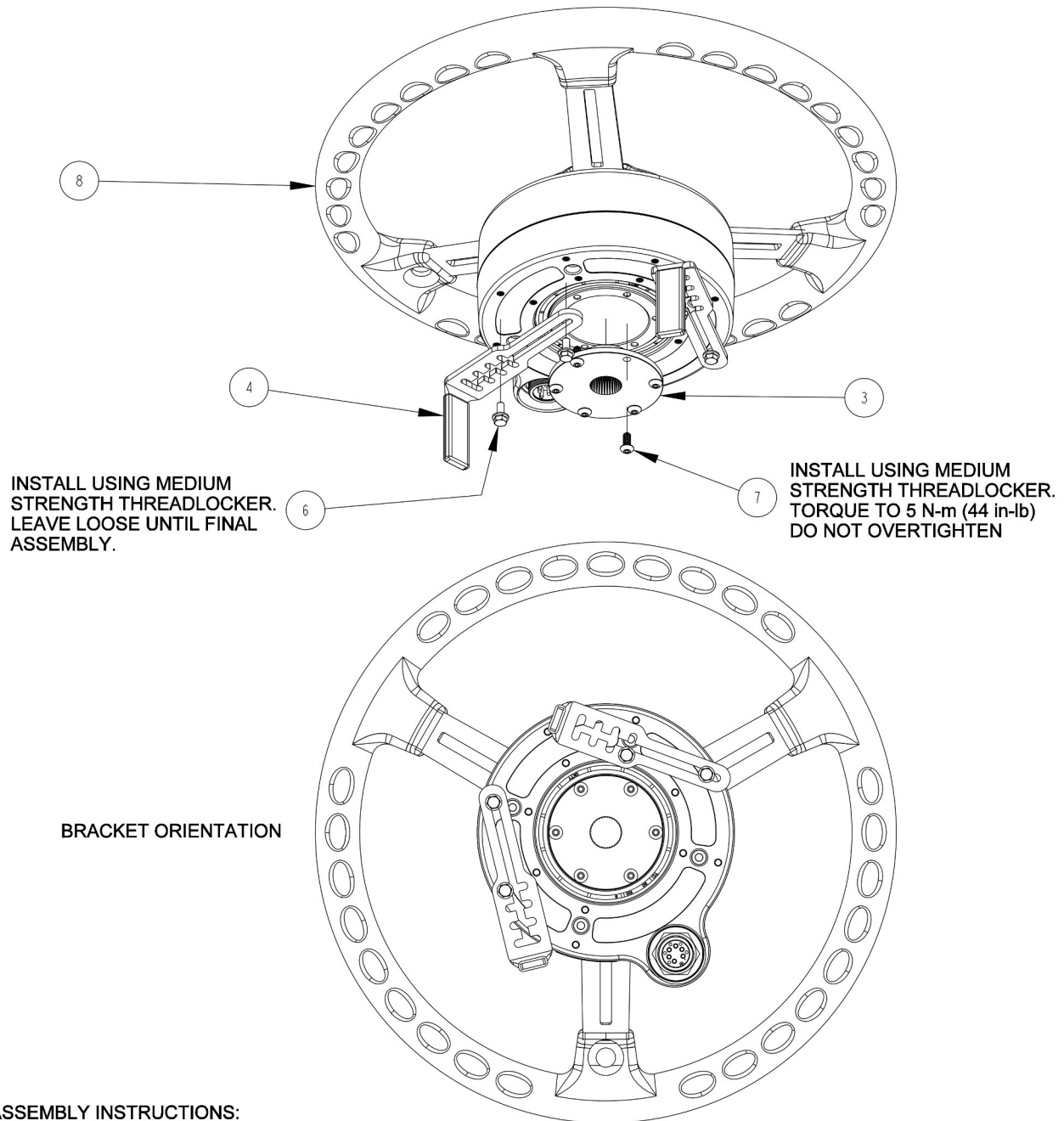
Case IH and New Holland 2WD/MFWD tractors

Steering column is ready for ESi² installation.



Install #6

Case IH and New Holland 2WD/MFWD tractors

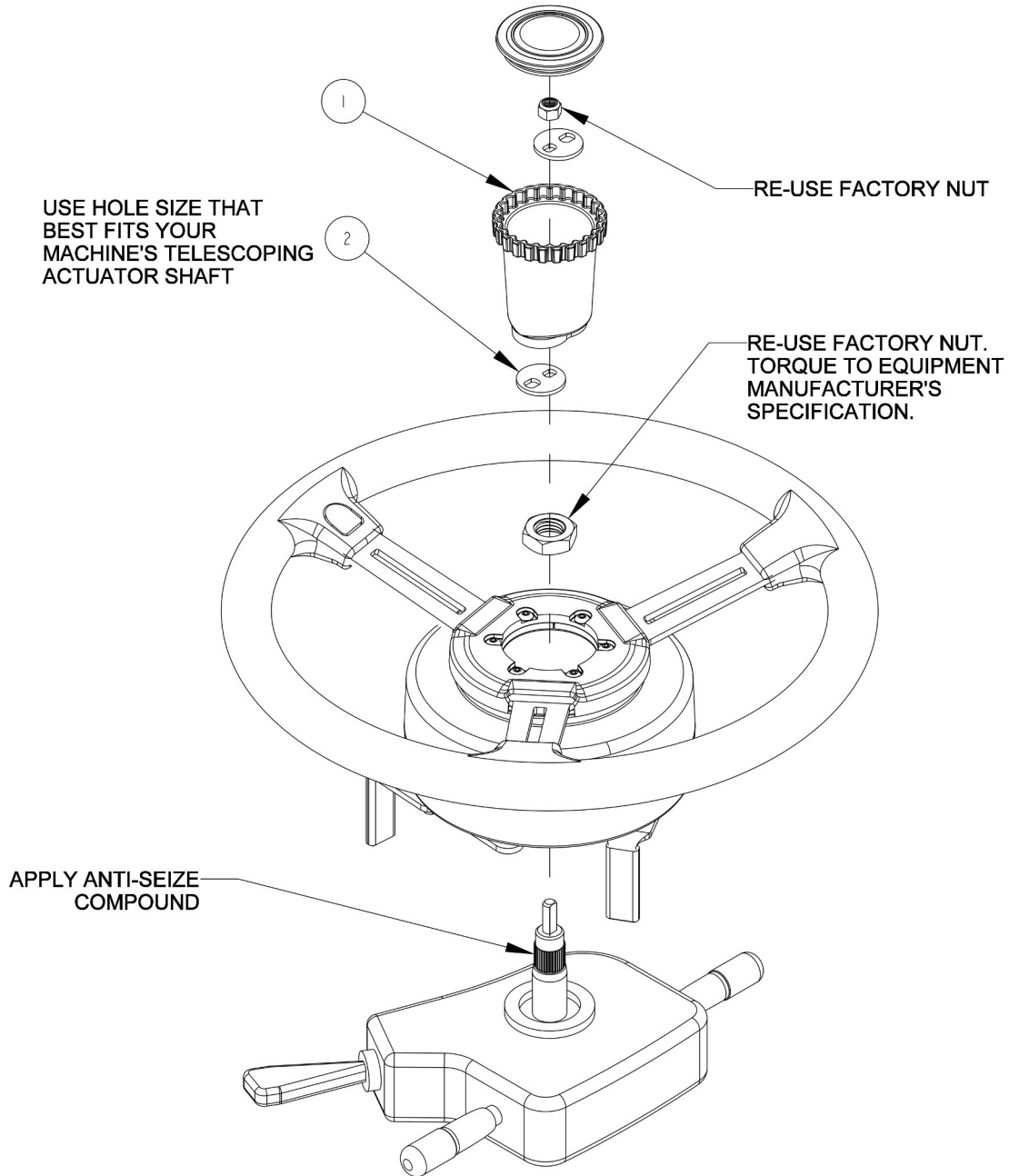


ASSEMBLY INSTRUCTIONS:

1. PRE-ASSEMBLE SPLINE ADAPTER AND BRACKETS TO WHEEL MOTOR.
2. PLACE ASSEMBLY ON STEERING SHAFT AND RE-INSTALL STEERING SHAFT NUT.
3. ADJUST BRACKETS TO FIT SNUG AGAINST THE STEERING COLUMN.
4. TIGHTEN SCREWS ATTACHING BRACKETS TO BOTTOM OF MOTOR.
TORQUE TO 5 N-m (44 in-lb). DO NOT OVERTIGHTEN.
ENSURE THAT THE ANTI-ROTATION BRACKETS DO NOT CONTACT THE SPLINE ADAPTER.
ENSURE THAT THE MOTOR DOES NOT MOVE IN RELATION TO THE STEERING COLUMN.
5. ASSEMBLE TELESCOPING ACTUATOR COMPONENTS.
6. ROTATE THE WHEEL A FULL TURN TO ENSURE THERE IS NO INTERFERENCE BETWEEN THE BRACKETS AND SPLINE ADAPTER, OR ANY MOVING PARTS AND MACHINE CONTROLS.

Install #6

Case IH and New Holland 2WD/MFWD tractors



ITEM	QTY	PART NUMBER	DESCRIPTION	NOTES
1	1	600-1486-01	TELESCOPING ACTUATOR KNOB	
2	2	601-1290-01	TELESCOPING ACTUATOR PLATE	
3	1	604-0074-10	SPLINE ADAPTER- ESI2, 36T x .875 MAJOR x .180/.870 OFFSET	
4	2	640-0184-01	ANTI-ROTATION BRACKET	
5	1	675-0126-000	LOCTITE 242 MEDIUM STRENGTH THREADLOCKER	NOT SHOWN
6	4	675-1345-10	SCREW, M5-0.8 X 12MM, HEX FLANGE	
7	6	675-1351-10	SCREW, M5-0.8 X 12MM, BUTTON HEAD	
8	1	910-4024-10	ESI2 ELECTRIC STEERING WHEEL	

Install #6

Case IH and New Holland 2WD/MFWD tractors

ESi² wheel successfully installed.
Continue to page 49 to complete the installation.



Install #7

Versatile MFWD & Articulated Tractors

Remove the steering wheel center cap and the nut holding the telescoping actuator knob on the shaft.

SAVE the nut as it will be used later in this installation.



Remove the telescoping actuator knob to gain access to the nut that holds the steering wheel onto the shaft.

Remove and **SAVE** this nut as it will be used later in this installation.

Following the manufacturer's recommended procedure, remove the steering wheel.

NOTE: Consult your equipment dealer if you are unsure of the correct procedure for removing the steering wheel.



Install #7

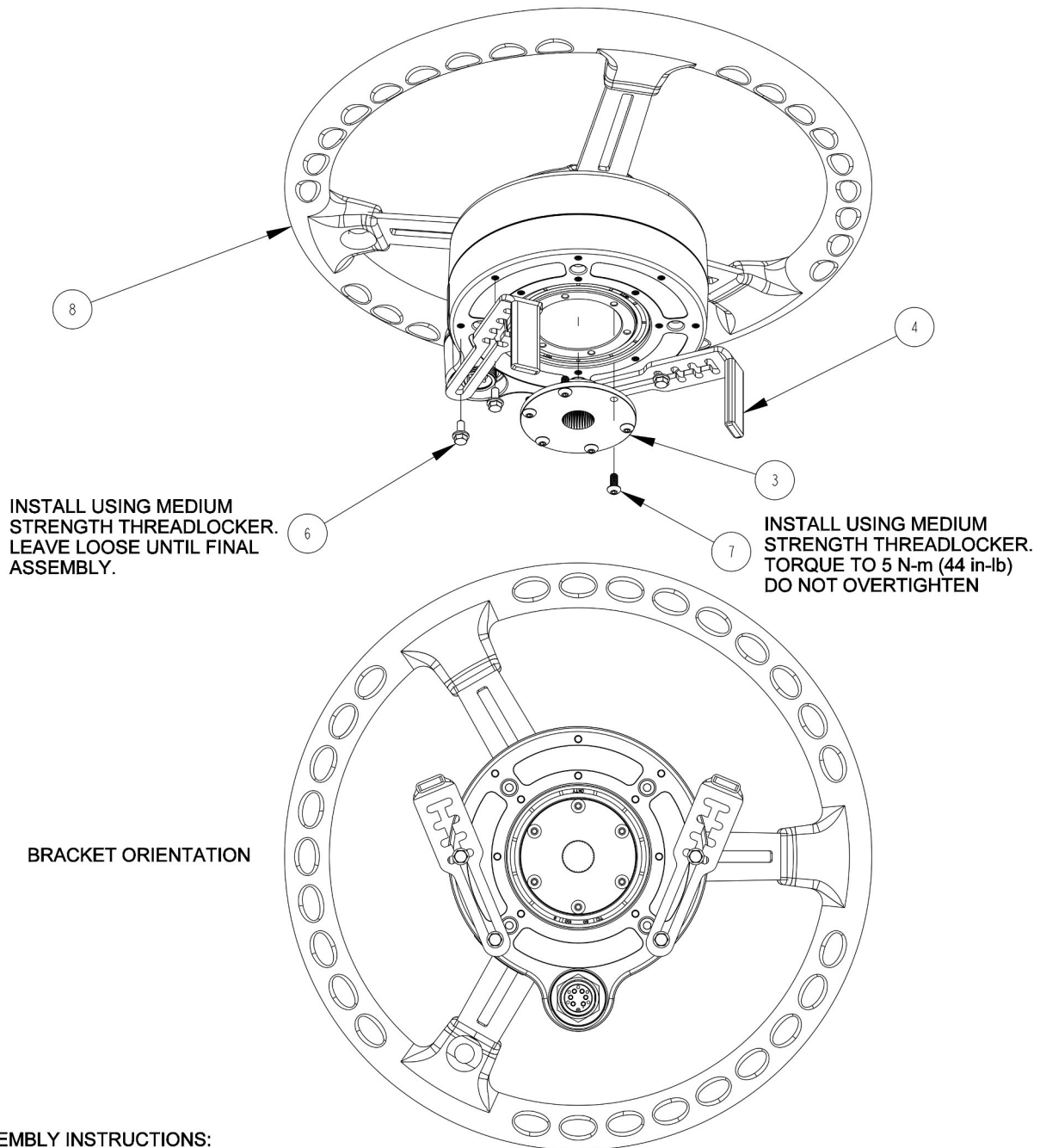
Versatile MFWD & Articulated Tractors

Steering column is ready for ESi² installation.



Install #7

Versatile MFWD & Articulated Tractors

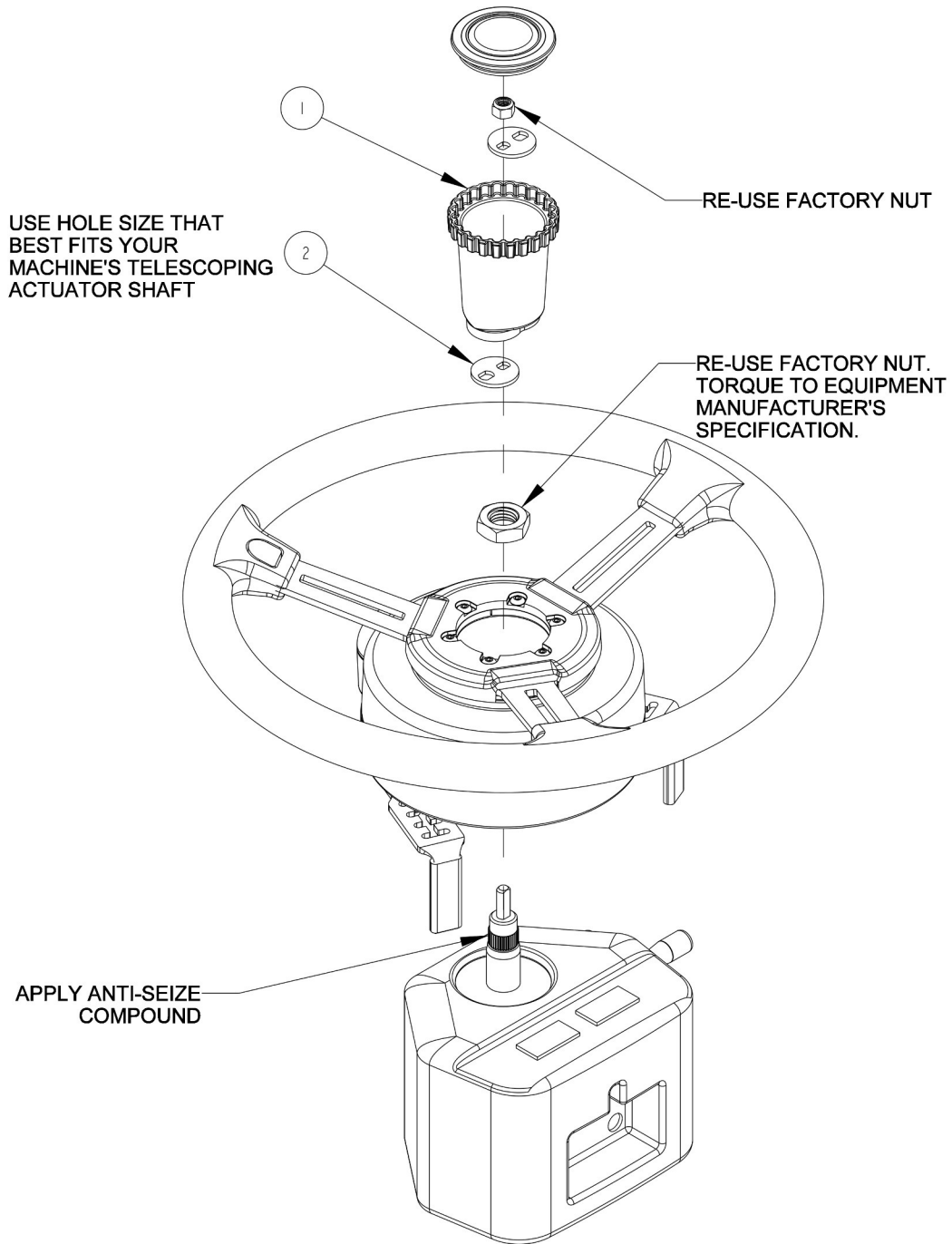


ASSEMBLY INSTRUCTIONS:

1. PRE-ASSEMBLE SPLINE ADAPTER AND BRACKETS TO WHEEL MOTOR.
2. PLACE ASSEMBLY ON STEERING SHAFT AND RE-INSTALL STEERING SHAFT NUT.
3. ADJUST BRACKETS TO FIT SNUG AGAINST THE STEERING COLUMN.
4. TIGHTEN SCREWS ATTACHING BRACKETS TO BOTTOM OF MOTOR. TORQUE TO 5 N-m (44 in-lb). DO NOT OVERTIGHTEN. ENSURE THAT THE ANTI-ROTATION BRACKETS DO NOT CONTACT THE SPLINE ADAPTER. ENSURE THAT THE MOTOR DOES NOT MOVE IN RELATION TO THE STEERING COLUMN.
5. ASSEMBLE TELESCOPING ACTUATOR COMPONENTS.
6. ROTATE THE WHEEL A FULL TURN TO ENSURE THERE IS NO INTERFERENCE BETWEEN THE BRACKETS AND SPLINE ADAPTER, OR ANY MOVING PARTS AND MACHINE CONTROLS.

Install #7

Versatile MFWD & Articulated Tractors



ITEM	QTY	PART NUMBER	DESCRIPTION	NOTES
1	1	600-1486-01	TELESCOPING ACTUATOR KNOB	
2	2	601-1290-01	TELESCOPING ACTUATOR PLATE	
3	1	604-0074-10	SPLINE ADAPTER- ES12, 36T x .875 MAJOR x .180/.870 OFFSET	
4	2	640-0184-01	ANTI-ROTATION BRACKET	
5	1	675-0126-000	LOCTITE 242 MEDIUM STRENGTH THREADLOCKER	NOT SHOWN
6	4	675-1345-10	SCREW, M5-0.8 X 12MM, HEX FLANGE	
7	6	675-1351-10	SCREW, M5-0.8 X 12MM, BUTTON HEAD	
8	1	910-4024-10	ES12 ELECTRIC STEERING WHEEL	

Install #7

Versatile MFWD & Articulated Tractors

ESi² wheel successfully installed.
Continue to page 49 to complete the installation.



Install #8

Versatile Nemesis and Kubota M8 MFWD Tractors

Remove the steering wheel center cap and the nut holding the telescoping actuator knob on the shaft.

SAVE the nut as it will be used later in this installation.



Remove the telescoping actuator knob to gain access to the nut that holds the steering wheel onto the shaft.

Remove and **SAVE** this nut as it will be used later in this installation.

Following the manufacturer's recommended procedure, remove the steering wheel.

NOTE: Consult your equipment dealer if you are unsure of the correct procedure for removing the steering wheel.



Install #8

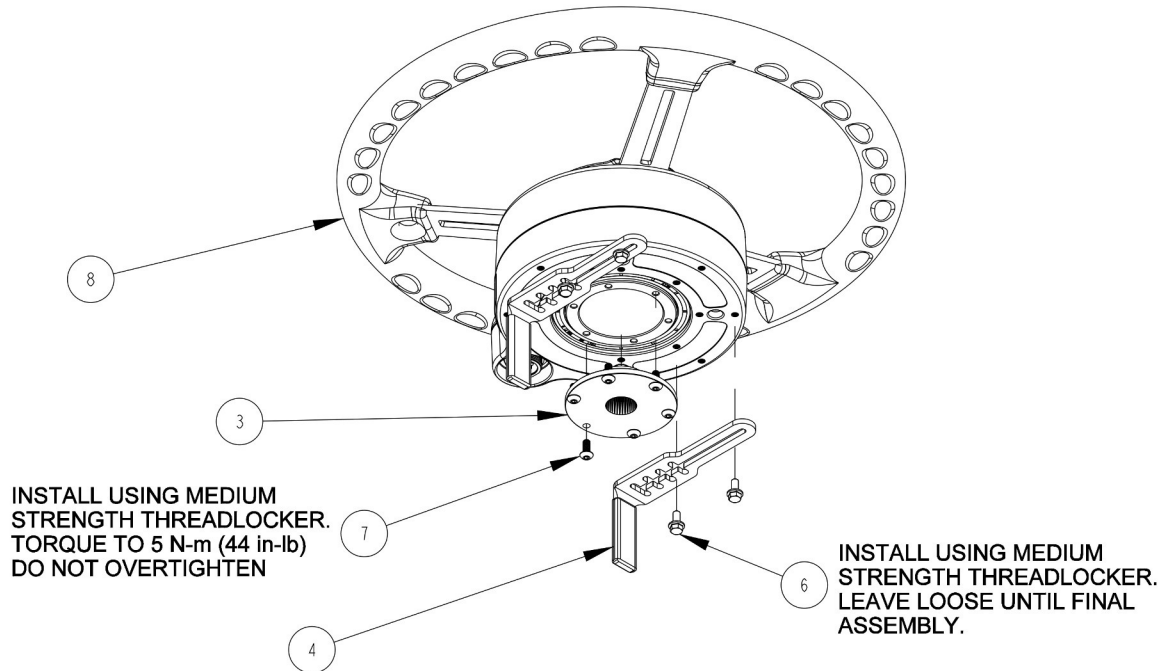
Versatile Nemesis and Kubota M8 MFWD Tractors

Steering column is ready for ESI² installation.

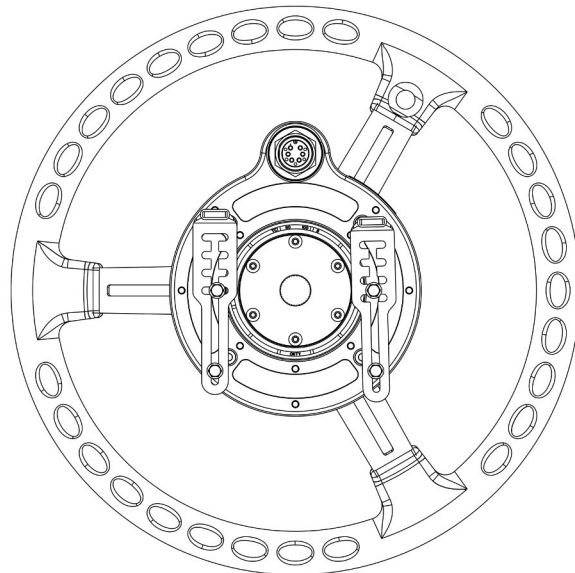


Install #8

Versatile Nemesis and Kubota M8 MFWD Tractors



BRACKET ORIENTATION

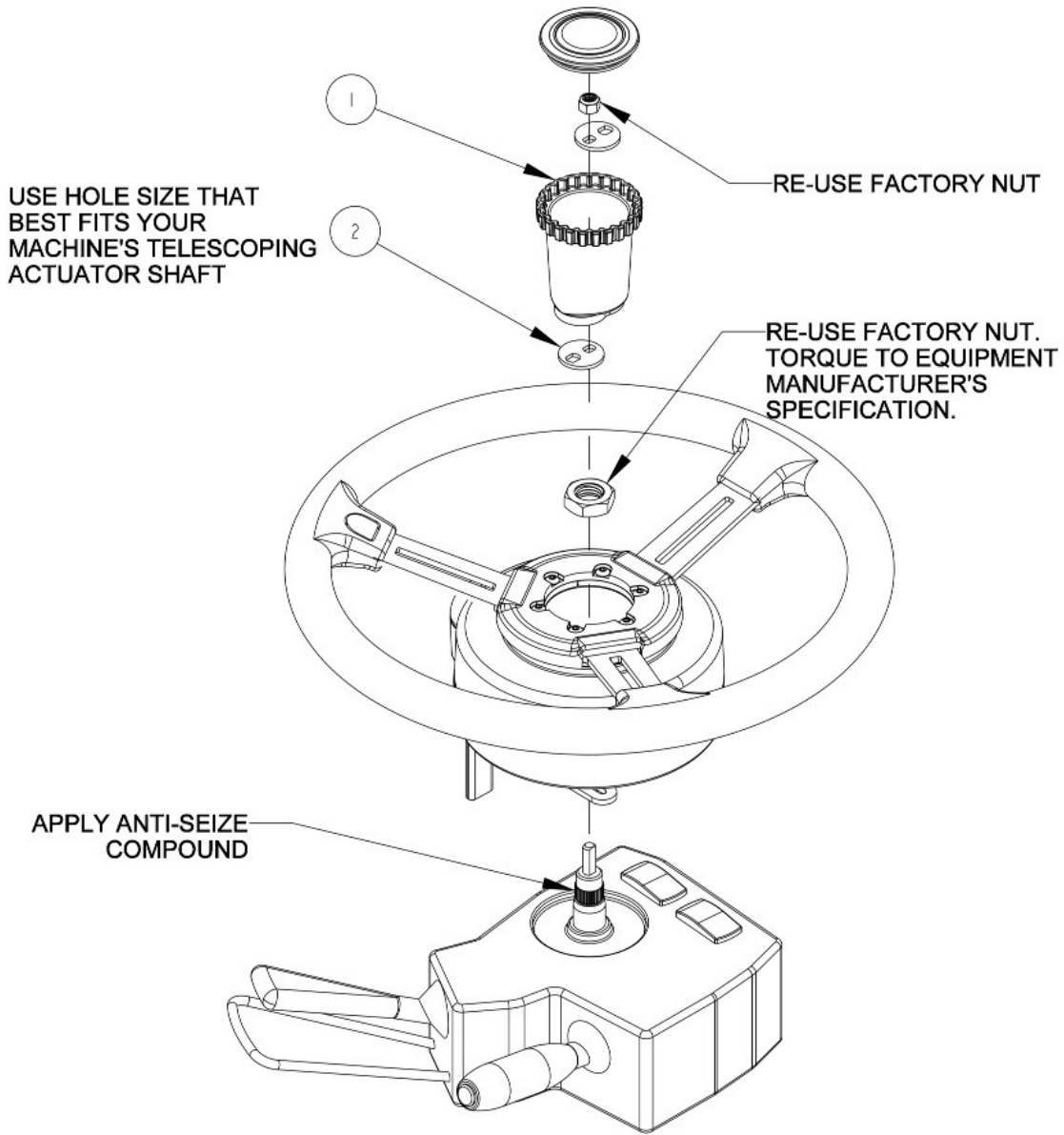


ASSEMBLY INSTRUCTIONS:

1. PRE-ASSEMBLE SPLINE ADAPTER AND BRACKETS TO WHEEL MOTOR.
2. PLACE ASSEMBLY ON STEERING SHAFT AND RE-INSTALL STEERING SHAFT NUT.
3. ADJUST BRACKETS TO FIT SNUG AGAINST THE STEERING COLUMN.
4. TIGHTEN SCREWS ATTACHING BRACKETS TO BOTTOM OF MOTOR.
TORQUE TO 5 N-m (44 in-lb). DO NOT OVERTIGHTEN.
ENSURE THAT THE ANTI-ROTATION BRACKETS DO NOT CONTACT THE SPLINE ADAPTER.
ENSURE THAT THE MOTOR DOES NOT MOVE IN RELATION TO THE STEERING COLUMN.
5. ASSEMBLE TELESCOPING ACTUATOR COMPONENTS.
6. ROTATE THE WHEEL A FULL TURN TO ENSURE THERE IS NO INTERFERENCE BETWEEN THE BRACKETS AND SPLINE ADAPTER, OR ANY MOVING PARTS AND MACHINE CONTROLS.

Install #8

Versatile Nemesis and Kubota M8 MFWD Tractors



ITEM	QTY	PART NUMBER	DESCRIPTION	NOTES
1	1	600-1486-01	TELESCOPING ACTUATOR KNOB	
2	2	601-1290-01	TELESCOPING ACTUATOR PLATE	
3	1	604-0074-10	SPLINE ADAPTER- ESI2, 36T x .875 MAJOR x .180/.870 OFFSET	
4	2	640-0184-01	ANTI-ROTATION BRACKET	
5	1	675-0126-000	LOCTITE 242 MEDIUM STRENGTH THREADLOCKER	NOT SHOWN
6	4	675-1345-10	SCREW, M5-0.8 X 12MM, HEX FLANGE	
7	6	675-1351-10	SCREW, M5-0.8 X 12MM, BUTTON HEAD	
8	1	910-4024-10	ESI2 ELECTRIC STEERING WHEEL	

Install #8

Versatile Nemesis and Kubota M8 MFWD Tractors

ESi² wheel successfully installed.
Continue to page 54 to complete the installation.



Install Completion Checklist

- Ensure steering wheel turns freely and anti-rotation brackets do not contact the spline adapter.
- Check, and if needed, tighten anti-rotation brackets to eliminate excess movement. Loose anti-rotation brackets can cause poor steering performance.
- For steering ECU installation instructions please refer to the ECU installation guide that came with your installation kit.